

## RECYCLING DEPOTS

These areas are available to local residents for the disposal of various types of municipal waste. The recycling depots are an additional service to house-to-house and roadside collections and they are the most sustainable and ecological solution with the lowest environmental impact for the collection of municipal waste. All waste collected is sorted for recovery, recycling or controlled disposal. Residents must present their Carta Smeraldo, the new Hera card for environmental services, in order to access the recycling depot.

By using these methods, we can improve the quality of our lives in full respect of the environment.

### Strength in unity

Starting from 1st May 2017 the municipal areas of Bastiglia, Bomporto, Campogalliano, Castelfranco Emilia, Modena and San Cesario sul Panaro have joined forces and linked their respective recycling depots to create a local system.

Residents of each of these areas will now be able to leave their sorted waste at any of the depots located in these areas and take advantage of the relative incentives. The recycling depots are an additional service to roadside and house-to-house collections and they are the most sustainable and ecological solution with the lowest environmental impact for the collection of municipal waste. All types of sorted waste may be taken to the depots including those unsuitable, due to their nature or size, to be collected by the regular waste collection services.

### An integrated incentives system

Moreover, starting from 1st May, Modena and the surrounding municipal areas have activated an integrated incentives system for residents who use the recycling depots. Thanks to this system, residents taking their waste to the depots will benefit from a discount on their TARI tax, calculated according to the quantity and type of material dropped off.

#### For information

**Customer Services 800-999-500**  
free calls from land lines and mobile phones,  
calls received from Monday to Friday from 8 am  
to 10 pm, Saturday from 8 am to 6 pm

**Business Customer Services 800.999.700**  
calls received from Monday to Friday from 8 am  
to 10 pm, Saturday from 8 am to 6 pm,  
free calls including from mobile phones

[www.gruppohera.it](http://www.gruppohera.it)

[www.ilrifiutologo.it](http://www.ilrifiutologo.it)  
Go online or download the "Rifiutologo" app.



May 2017 edition, printed on recycled paper - designed by Koan Multimedia



HERAGROUP

## NEW PROCEDURES FOR SORTED WASTE COLLECTION SERVICE IN BASTIGLIA AND BOMPORTO



Carta Smeraldo, the new "Hera card for environmental services"

Dear Resident,  
Starting in June, sorted collection in your area will change. The municipal administration and Hera are launching a project that will gradually expand to the entire municipal area, aimed at improving the use of environmental services and leading, in the future, to the introduction of accurate measurement systems for waste dropped off in order to implement a rate model (the so-called "exact rate") which tracks the quantity of unsorted waste dropped off by each user and aims to prevent increasingly large amounts of waste and to ensure greater social fairness and a better quantity and quality of sorted waste.

To implement this important trial, certain changes have to be made to the service. You can help by adopting new but simple habits when sorting waste for collection.

This project is a part of the integrated waste management system and is broken down into street-side collection and recycling depots that are always available to all city residents, in addition to specific resident collection services for commercial operations, production activities and farming areas.

We believe that this solution will lead to a much more direct, transparent and fair service. To do this, your collaboration is essential so that the model used can operate and achieve the results that we all expect and hope for in the future.

Sorted waste collection is required by law and the regulations of competent authorities. Failure to comply could result in administrative sanctions.

## NEW STREET-SIDE DROP-OFF BINS

### How to drop off paper, cardboard, plastics, tins and garden waste

To improve the quality of collection and avoid improper drop-offs of unsorted waste, street-side drop-off bins for paper/cardboard, plastics/tins and gardening waste have a new unlocking system that can be unlocked using the **Carta Smeraldo (Hera card for environmental services)**, which has been delivered to all users.

To unlock the bin:

1. **press the button**, which will activate the recognition and measurement system;
2. **swipe the Carta Smeraldo over the sensor**, which activates the mechanism to unlock the bin;
3. **drop off waste** by pressing the pedals and inserting sorted waste;
4. **complete the drop-off** by releasing the pedals in order to close the door and finish the procedure.



### How to drop off unsorted waste

The street-side drop-off bin for unsorted waste has a cover that can be unlocked using the **Carta Smeraldo**. Bags with a capacity of up to about 20 litres must be used (a standard size for under-sink rubbish bins); large bags cannot be dropped off.

The following steps must be repeated for each bag/drop-off:

**1. PRESS THE BUTTON**, which will activate the recognition and measurement system



**2. SWIPE THE CARTA SMERALDO OVER THE SENSOR**, which activates the mechanism to unlock the cover

**3. DROP OFF WASTE** by rotating the lever; the cover will open, making it possible to insert a tightly closed bag  
**4. COMPLETE THE DROP-OFF** by rotating the lever in the opposite direction to close the cover and finish the procedure

### PAPER AND CARDBOARD



The Carta Smeraldo is needed to use the bin

**OK**

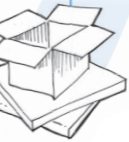
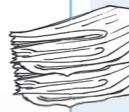
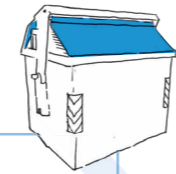
Newspapers, books, notebooks, packaging paper, cardboard, paper boxes, washing powder boxes, mixed packaging (tetrapak-type cartons), paper containing small amounts of other materials, paper cups and trays.

**NOT OK**

Plastic covers, greasy paper or paper soiled with glue or other substances, grease-proof paper, chemical fax paper or carbonless copy paper, carbon paper, wallpaper, parchment paper, oven paper and plastic glasses and plates.

**HOW**

Cardboard and boxes should be folded to reduce volume.



### PLASTICS AND TINS



The Carta Smeraldo is needed to use the bin

**OK**

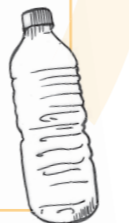
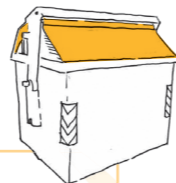
All plastic packaging (mineral water and soft drink bottles, bottles, food tubs, shopping bags, snack and cracker wrappers, boxes, detergent refill bags, shampoo and bath foam bottles, etc.), plates and glasses with no food residues, food and dog food tins, other tins, metal caps.

**NOT OK**

All plastic items not used for packaging (furnishings, toys, plastic cutlery, automobile parts and accessories, etc.), tins and containers that held chemical products (e.g. glues, paints, solvents, etc.).

**HOW**

Empty dirty containers and rinse as necessary to reduce packaging volume as much as possible.



### GLASS



The use of the Carta Smeraldo is not necessary

**OK**

All glass containers: bottles, jars, food jars, glasses, etc.

**NOT OK**

Anything not categorised as glass: mirrors, windowpanes, eyeglasses, pyrex, ceramics, porcelain, light bulbs and neon tubes.

**HOW**

Insert empty containers.



### ORGANIC MATERIAL



The use of the Carta Smeraldo is not necessary

**OK**

Kitchen waste, spoiled food, coffee grounds, tea filters, biodegradable plastic bags and objects, fruit peel and stones, small lawn trimmings, small plants and cut flowers, used paper towels (e.g. Scottex).

**NOT OK**

Liquid foods; cigarette butts; pet litter; wood that has been treated or painted or is in large pieces; packaged foods and any non-organic waste (nappies, tampons, etc.).

**HOW**

Place in bags provided by Hera; bio-degradable or paper bags (e.g., bread bags) may also be used. Households that do not have rubbish bins may pick one up at the recycling depot.



### GARDEN WASTE



The Carta Smeraldo is needed to use the bin

**OK**

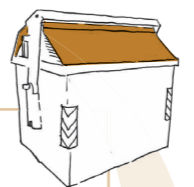
Garden waste, prunings, small logs, bark, sawdust, small pieces of wood and chipboard without paint or glue. Large amounts of lawn trimmings must be dropped off at the recycling depot; drop-offs of garden waste in bins are only allowed if it is not possible to go to the recycling depot.

**NOT OK**

Food waste, cigarette butts, pet litter and any non-organic waste, soil, plastics, wood and painted and/or glued objects.

**HOW**

Wood waste must be inserted loose in the appropriate container, with no bags or strings.



### UNSORTED WASTE



The Carta Smeraldo is needed to use the bin

**OK**

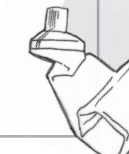
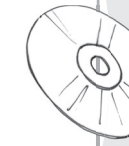
All materials not eligible for sorted waste collection (e.g. rubber, foam rubber, fruit stones, ceramic fragments, cigarette butts, pet litter, rags, treated or painted wood, nappies, tampons, gauze, plasters, plastic cutlery, chemical, grease-proof or soiled paper, non-electronic toys, vacuum cleaner filters and bags).

**NOT OK**

Sortable waste and all items that can be taken to recycling depots: hazardous waste, oversized waste, liquid substances, burning materials, construction and demolition waste (e.g. inert materials, rubble).

**HOW**

Drop off in closed plastic bags with a capacity of up to about 20 litres, which should not be left on the ground near containers.



### How the exact rate will be determined

When the new collection system is up and running throughout the municipality, the unsorted waste produced will help to determine each resident's exact rate. The calculation will be based on the number of drop-offs made. For street-side bins, the activation of the cover will count as one drop-off. For door-to-door collection in rural and artisan areas, leaving a rubbish bin or can with unsorted waste by the road will count as one drop-off.

